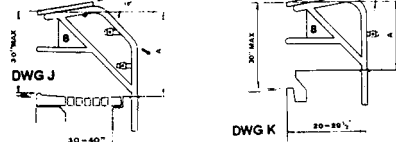


Paragon Track Start Competitor Model (Full Height)

The 24" by 32" top supports the track type start now used by many competitive swimmers. It includes the same features as our Competitor and Long Reach Competitor models to offer greater stability and to accommodate a variety of gutter configurations.

Spec. Sheet 10.60.3 Spec. Sheet 10.60.4

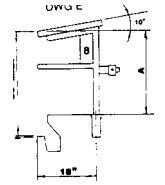
	Each	6+
Side Step	\$2566.95	\$2417.75
Rear Step	\$3269.00	\$3078.95



Paragon Long Reach Competitor Model (Full Height)

For pools with wide overflow gutter systems. Dual legs with stiffeners and a special deep anchor system offer greater stability. Configurations can alter based upon specific "A" and "B" dimensions.

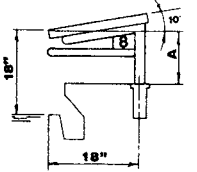
	Each	6+
"B" 30-40"	\$3464.55	\$3263.15
"B" 20-29"	\$2995.25	\$2821.10



Paragon Competitor Model (Full Height)

Dual legs give greater stability. Uses Competitor Anchor System Only. Spec. Sheet 10.59

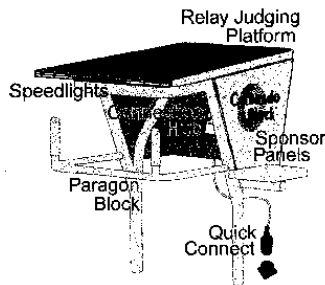
Each	6+
\$2076.15	\$1955.40



Paragon Varsity Competitor Model (Low Height)

Accommodates NFSHSA 18" ruling. Dual legs give greater stability. Uses Quickset Anchor System only. Furnished with tilted top only.

Spec. Sheet 10.69	Each	6+
	\$1831.70	\$1725.20



COLORADO BLOCK

Platform Adaptor Kits - All kits come equipped with a Sponsor's panel, mounting brackets and miscellaneous parts needed to adapt the CTS equipment to our starting platforms. Select the appropriate kit for the following KDI Paragon Starting Platform models:

	Each	6+
22670D Track Start Side Step Models - 24" x 32" Top	\$715.35	\$670.00
22671D Long Reach Track Start Rear Mount Models - 24" x 32" Top		
22672D Standard Competitor Models - 24" x 20" Top		
22673D Long Reach Competitor Models - 24" x 32" Top		
22674D Standard Paraflyte/Quickset Models - 24" x 20" Top		

Colorado Time Systems Equipment - The CTS kit comes equipped with the Relay Judges Platform, Horn and Connector Plate for KDI Paragon Starting Platforms. Please select the appropriate kit for the following KDI Starting Platform models:

	Each	6+
22670E Track Start Models - 24" x 32" Top	\$2043.85	\$1920.00
22673E Standard/Competitor Models - 24" x 20" Top		

S. R. SMITH STARTING PLATFORMS - 9° Slope



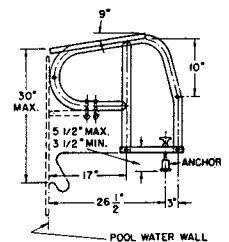
A-41796-1



A-41795-1

Starting Platform is of new 9° slope cantilever design with one non-slip step, non-slip top surface and anchors provided. Lane numbers are optional features.

Materials - Stainless steel starting platform To be constructed of 1.900" O.D. x .049" wall thickness, polished stainless steel tubing. Support rails to be complete heli-arc welded assemblies. One non-slip step to be mounted between side rails. Platform to be a minimum 22" x 22" with flange on four sides with non-slip top surface. Two 1-1/4" rectangular base supports to be chrome plated brass with two brass anchors. Platform assembly to be easily removed with two brass tee bolts. Backstroke bar to be a minimum 3/4" diameter stainless steel tube fastened to side rails flush with front of non-skid platform.



PLEASE NOTE: Legs have to be cut to size in field.



	Each	6+
A-41796-1 Starting Platform with Upper and Lower Backstroke Bars - Anchors 30" Shipping Wt. - 60 lbs.	\$1105.95	\$967.95
A-41795-1 Starting Platform Low Profile 18" Shipping Wt. - 40 lbs.	\$1091.95	\$954.95
A-41659 Flush Anchor Shipping Wt. - 4 lbs.	\$169.95	\$154.95
A-42671 Lane Market Number (Nos. 1 thru 8 only) Shipping Wt. - 1 oz.	\$44.95	\$41.95
A-40190-5 Replacement Top 22" x 22"	\$252.95	\$235.95