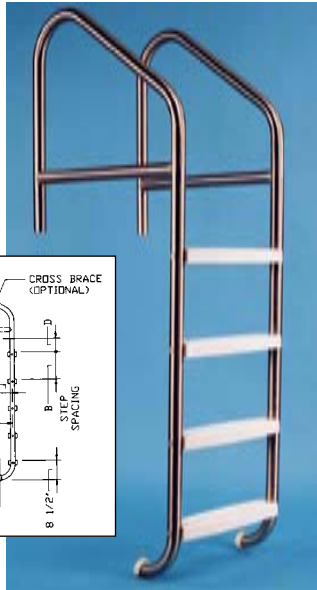
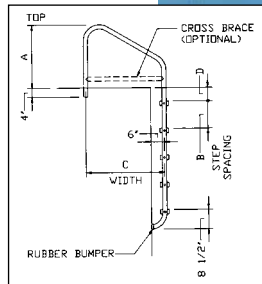


## LADDERS

The Ladders shown on these pages offer the most convenient method of pool entry wherever stairs cannot be used. Each ladder consists of two frames with treads bolted between them. All frames are made of corrosion resistant T304 stainless steel. The bolts have flat rounded heads curved to fit the tubing of the frames. All ladder styles which have the frames resting against the pool wall have rubber bumpers to prevent damage to the wall. All vertical ladders are similar in appearance and vary only slightly in:

- Wall thickness of tubing
- Width of frames from front to back
- Height of frames above deck
- Step spacing
- Number of steps

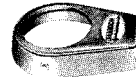
Anchor Sockets and Escutcheon Plates are not included with ladders and must be ordered separately.



## ANCHOR SOCKETS AND ESCUTCHEON PLATES



**Anchor Sockets** are used for anchoring all deck equipment (except rear legs of stands, starting platforms and stanchions). Cast bronze with locking bronze wedge and stainless steel bolt.



**Escutcheon Plate** is a finishing touch to cover anchor sockets. Deluxe unit (not shown) is a stainless stamping.

I.D. No. 28102	Anchor socket, bronze	\$45.00 Each
I.D. No. 28301	Escutcheon plate, deluxe	34.00 Each
I.D. No. 28302	Escutcheon plate, standard	11.00 Each

ABS WHITE PLASTIC STEPS - Replacement steps for Paragon Guard Stands, Ladders, & Diving Platforms.			
I.D.#	Description	Each	2+
44101	19" Vertical Step	\$43.10	\$40.00
44104	19" Sloping Step	43.10	40.00
44107	26" Vertical Step	93.50	86.75
44109	26" Sloping Step	93.50	86.75

### Heavy Duty

For commercial and institutional use. Made only in thicker grades of stainless steel withstand heavier usage. **Spec. Sheet 30.01**

### Heavy Duty with Cross Brace

Recommended for heavy duty commercial use at public and institutional pools. Reinforced with cross braces for extra rigidity and strength. **Spec. Sheet 30.03**

**STANDARD WIDTH OF LADDERS IS 19" CENTER OF ANCHOR TO CENTER OF ANCHOR**

### Florida Style

Extends extra high over deck to clear the 6" curb required on all Florida pools. **Spec. Sheet 30.01**

### Florida Style with Cross Brace

Same as Florida style but with cross braces for extra rigidity. **Spec. Sheet 30.03**

### Deluxe

Recommended for residential pools and light commercial use. Ladder frames go slightly deeper into water and extend slightly higher

above deck compared to normal residential ladders. Recommended only for residential pools of either concrete or vinyl-lined.

	Without Cross Brace			
	A	B	C	D
Heavy Duty	28	12	24, 29, 35	6
Deluxe	26	12	25, 30	6
Florida	32	12	36	4

	With Cross Brace			
	A	B	C	D
Heavy Duty	28	12	24, 29, 35	6
Florida	32	12	36	4

### Florida Ladders, 36" width

	Each	2+
42511 .065 2 Step	\$188.35	\$177.40
42512 .065 3 Step	286.15	269.50
42513 .065 4 Step	327.85	308.80
42514 .065 5 Step	365.00	343.80
42515 .109 2 Step	503.20	473.95
42516 .109 3 Step	591.85	557.45
42517 .109 4 Step	642.70	605.35
42518 .109 5 Step	716.35	674.70
42519 .145 2 Step	705.95	664.90
42520 .145 3 Step	794.60	748.40
42521 .145 4 Step	875.40	824.50
42522 .145 5 Step	956.90	901.25

### Florida Ladders, Cross Braced 36" width

	Each	2+
42151 .065 2 Step	\$357.20	\$336.45
42152 .065 3 Step	402.15	378.80
42153 .065 4 Step	447.15	421.15
42154 .065 5 Step	492.80	464.15
42155 .109 2 Step	709.85	668.60
42156 .109 3 Step	794.60	748.40
42157 .109 4 Step	922.35	868.70
42158 .109 5 Step	936.05	881.60
42159 .145 2 Step	801.10	754.55
42160 .145 3 Step	915.85	862.60
42161 .145 4 Step	1078.15	1015.45
42162 .145 5 Step	1166.15	1098.35

### Heavy Duty Ladders, 24"

	Each	2+
42201 .145 2 Step	\$561.20	\$528.60
42202 .145 3 Step	642.70	605.35
42203 .145 4 Step	716.35	674.70
42204 .145 5 Step	794.60	748.40
42213 .109 2 Step	462.80	435.90
42214 .109 3 Step	537.75	506.50
42215 .109 4 Step	629.00	592.45
42216 .109 5 Step	632.30	595.50

### Heavy Duty Ladders, 29"

	Each	2+
42205 .145 2 Step	\$591.85	\$557.45
42206 .145 3 Step	719.60	677.80
42207 .145 4 Step	760.00	715.85
42208 .145 5 Step	899.55	847.25
42217 .109 2 Step	480.40	452.45
42218 .109 3 Step	561.20	528.60
42219 .109 4 Step	625.10	588.75
42220 .109 5 Step	640.75	603.50

### Heavy Duty Ladders, 35"

	Each	2+
42209 .145 2 Step	\$604.90	\$569.75
42210 .145 3 Step	672.70	633.60
42211 .145 4 Step	743.75	700.50
42212 .145 5 Step	818.00	770.50
42221 .109 2 Step	499.95	470.90
42222 .109 3 Step	591.85	557.45
42223 .109 4 Step	604.90	569.75
42224 .109 5 Step	665.50	626.85

### Cross Braced Ladders, 24"

	Each	2+
42101 .145 2 Step	\$740.50	697.45
42102 .145 3 Step	827.20	779.10
42103 .145 4 Step	933.45	879.15
42104 .145 5 Step	997.95	939.95
42113 .109 2 Step	640.75	603.50
42114 .109 3 Step	717.65	675.95
42115 .109 4 Step	795.25	749.00
42116 .109 5 Step	872.15	821.45

### Cross Braced Ladders, 29"

	Each	2+
42105 .145 2 Step	\$762.65	\$718.30
42106 .145 3 Step	853.25	803.65
42107 .145 4 Step	943.20	888.35
42108 .145 5 Step	1033.15	973.12
42117 .109 2 Step	653.15	615.15
42118 .109 3 Step	750.25	706.65
42119 .109 4 Step	846.75	797.50
42120 .109 5 Step	943.20	888.35

### Cross Braced Ladders, 35"

	Each	2+
42109 .145 2 Step	\$814.15	\$766.80
42110 .145 3 Step	962.75	906.80
42111 .145 4 Step	1039.70	979.25
42112 .145 5 Step	1110.75	1046.15
42121 .109 2 Step	659.65	621.30
42122 .109 3 Step	756.80	712.80
42123 .109 4 Step	853.25	803.65
42124 .109 5 Step	949.75	894.50

Call for Pricing on Deluxe Ladders